

## Tonbridge and Malling Borough Council

### Statistical Profile

**Area and population:**

Area: 24,013 ha  
Density: 4.82pp/ha

Population (all ages at mid 2007) 115,800

**Age profile (at mid 2007):**

- 0 – 15 years: 24,000
- 16 – 64 years: 73,500
- 65+ years: 18,300

Households (at 2001): 42,735

Health claimants: 6,110

**Economy:**

Economically active 16+ (at mid 2007): 58,700

**Education and skills (at 2001):**

- No qualifications: 19,712
- Qualified: 57,585

**Employment structure (mid 2007)**

- All industries: 55,600
- Primary: 1,900
- Manufacturing/construction: 9,100
- Public service: 12,800
- Distribution/retail: 12,900
- Other: 18,900

**Housing:**

Housing completions (1997 – 2007): 5,315

Average house prices (2007): £281,135

Median weekly earnings: £497.20

**Forecast change (2011 – 2021)**

	2011	2016	2021
Population	117,400	120,300	123,900
Households	48,400	50,600	52,800
Economically active	59,300	59,900	60,700

## *Kent County Council Community Infrastructure Provision*

### **Adult education**

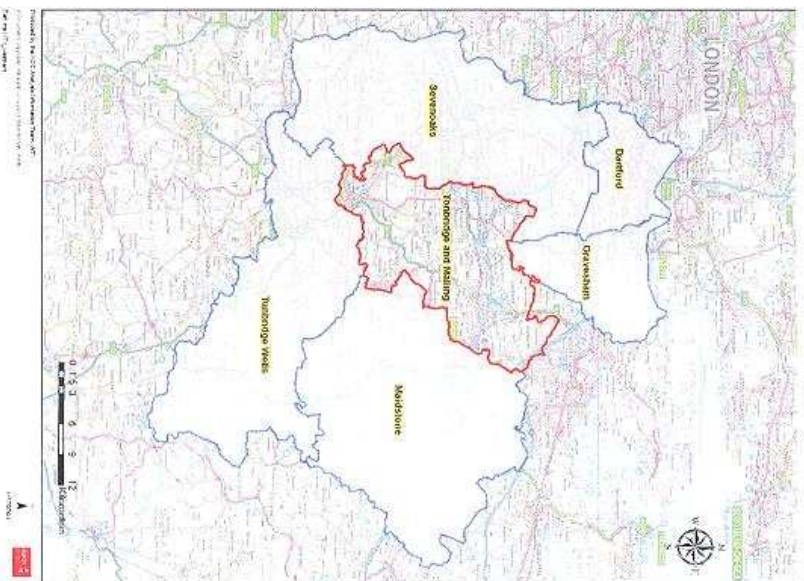
#### **Current provision:**

- Main centre in Tonbridge offering full enquiry and enrolment service operating from a dedicated building;
- Local centre in Snodland offering a limited range of provision and opening times;
- A range of community venues at various locations within the district delivering Kent Adult Education Services programmes;
- A Skills Plus centre in Tonbridge Centre.

#### **Impact of new housing developments**

For smaller developments impacts will be mitigated through expansion of existing services. Some contributions may be pooled to invest in main centres.

For larger developments impacts may be mitigated through on-site provision (including local venues and/or Skills Plus centres). Where possible, the service seeks to co-locate with other service providers in shared-use community buildings, preferably centrally located to the development with good public transport and walking routes.



The following tables outline development plans for Tonbridge and Malling Borough encompassing existing services and building capacity for future increases in the population. As part of the hub and spoke approach, some resources for new centres of population will need to be invested in district hub services.

It is expected that developers will make a proportionate contribution according to the additional population generated by their developments. The services delivered will target people over the age of 19 in the community.

**Project 1:**

<b>District hub development</b>	
<b>Description</b>	Main centre for district.
<b>Justification</b>	Delivery of statutory responsibility to deliver adult education to 19+ population.
<b>Service model</b>	Dedicated building providing a full enquiry and enrolment service easily accessible by all people in the local communities.
<b>Contribution requirements</b>	The service seeks costs towards relocation and expansion of the centre to more suitable location closer to new population areas.
<b>Partners involved</b>	West Kent College, Kent County Council.
<b>Typical location</b>	Main towns.
<b>Planned for</b>	Tonbridge

**Project 2:**

<b>Skills Plus</b>	
Description	ICT based learning provision.
Justification	Delivery of statutory responsibility to deliver adult education to 19+ population.
Service model	Provision of flexible ICT based learning, primarily in mathematics and English leading to recognised qualifications.
Contribution requirements	The service seeks costs towards provision of space and equipment to provide ICT based learning programmes.
Partners involved	
Typical location	Main towns within each district delivered through a variety of venues including Gateways, libraries and archives and within other adult education centres.
Planned for	Tonbridge

*Kent County Council Community Infrastructure Provision*

**Libraries and archives**

**Current provision:**

Provision	Name
Countywide records service	Modern Records Centre
Countywide library access service	Access Service
District hub (combined with AEC )	Tonbridge
Rural community	Borough Green
Rural community	East Peckham
Rural community	Hadlow
Rural community	West Malling
Neighbourhood community	Hildenborough
Neighbourhood community	Larkfield
Neighbourhood community	Snodland
Neighbourhood community	Tonbridge North
Access point	Holmesdale School
Mobile (based at Tonbridge)	Covers locations at: Ashurst, Bidborough, Bough Green, Brasted Chart, Brenchley, Charcott Leigh, Chiddingstone , Chiddinstone

Provision	Name
	Horth, Crockham Hill, Cowden, Dunks Green, Five Oak Green, Fordcombe, Four Elms, Golden Green, Gouldhurst, Halstead, Hawkenbury Hayer, Ide Hill, Ightham, Ivy Hatch, Klindown, Knockholt, Lamberhurst, Langton Green, Mark Beech, Penshurst, Plaxtol, Queen Street, Matfield, Sevenoaks, Shipbourne, Sundridge, Tonbridge, Toys Hill, Tudeley, Tunbridge Wells , West Peckham and Wrotham.

---

**Impact of new housing developments**

The impacts of housing growth will be met through a network of libraries based around a district hub. Depending upon the location, rate of growth in demand and size of development this could mean expansion of existing facilities, a mobile service, new build, alternative ways of delivering the service, or any combination of these. For example co-location with other service providers in shared-use community buildings, preferably centrally located to the development and with good public transport and walking routes.

It is expected that developers will make a proportionate contribution according to the additional population generated by their developments. The services delivered will target all people in the community.

The following tables outline current development plans for Tonbridge and Malling Borough encompassing existing services and building capacity for future increases in the population. As part of the hub and spoke strategy, some resources for new centres of population will need to be invested in district and countywide hub services.

The service is developing plans to modernise and upgrade the Tonbridge Library incorporating provision for other partners to operate from the building. In the short term the service will look to increase capacity by internal re-configuration of space.

There are no current plans for Borough Green, Hadlow, Hildenborough, Larkfield and Tonbridge North libraries.

*Kent County Council Community Infrastructure Provision*

**Project 1:**

<b>Snodland Neighbourhood Community Library</b>	
Description	Service point for small but relatively defined urban communities situated on the edge of large towns.
Justification	Statutory requirement to deliver library services.
Model	Direct access to popular range of materials, relevant to local community needs including local history resources. Support to mobile library and remote access services.  To act as a centre for the local community including extending use of buildings for other community needs.  Also remote access to wider range of services provided by local hub library and centres of excellence.
Contributions required	The service seeks costs towards modernisation at Snodland to increase capacity.
Partners	Tonbridge and Malling Council, Kent County Council.
Typical location	Suburban areas.
Planned for	Snodland

**Project 2:**

<b>East Peckham Rural Community Library</b>	
Description	Service point for a wide dispersed and rural catchment area.
Justification	Statutory requirement to deliver library services.
Model	Direct access to popular range of materials, relevant to local community needs including local history resources. Support to mobile library and remote access services.  To act as a centre for the local community including extending use of buildings for other community needs.  Also remote access to wider range of services provided by local hub library and centres of excellence.
Contributions required	The service seeks costs towards modernisation at East Peckham to increase capacity.
Partners	Tonbridge and Malling Council, Kent County Council.
Typical location	Service point for a wide dispersed and rural catchment area.
Planned for	East Peckham

*Kent County Council Community Infrastructure Provision*

**Project 3:**

<b>West Malling Rural Community Library</b>	
Description	Service point for a wide dispersed and rural catchment area.
Justification	Statutory requirement to deliver library services.
Model	Direct access to popular range of materials, relevant to local community needs including local history resources. Support to mobile library and remote access services.  To act as a centre for the local community including extending use of buildings for other community needs.  Also remote access to wider range of services provided by local hub library and centres of excellence.
Contributions required	The service seeks costs towards re-configuration to West Malling increase capacity.
Partners	Tonbridge and Malling Council, Kent County Council.
Typical location	Service point for a wide dispersed and rural catchment area.
Planned for	West Malling

**Project 4:**

<b>Library and History Centre (County Centre of Excellence)</b> <i>(This will bring together existing library and archive services, in Maidstone. The new building would also serve as the district hub)</i> This project also encompasses adult education requirements.	
Description	Countywide service for specialist library and archive services.
Justification	Statutory requirement to deliver library services.
Model	Centre will house a comprehensive library and archive collection and staff who act as county experts in the fields of information and archive work.  Advisory and referral service to staff working at the other library and archive facilities in the county.
Contributions required	The service seeks costs towards the build and fit out of the centre to increase capacity to serve whole county council area.
Partners	Maidstone Borough Council, Kent County Council.
Typical location	Community populations in excess of 20,000.
Planned for	Maidstone but to service all Kent communities.



**Youth service (paired with Maidstone)**

**Current provision**

- SAMAYS Youth Centre on site of Holmesdale Technology College. Staffed by an area youth worker;
- Malling Detached Project. A mobile-home vehicle takes youth services to communities in and around the Malling area. Staffed by a youth worker;
- Tonbridge and Hadlow Youth Project (detached). Uses a converted Iveco van to provide opportunities for young people in Tonbridge (using the Teen and Twenty Club) and Hadlow (using a new youth centre opening in February 2009). Staffed by a part-time youth worker;
- Community youth tutor at Ridge View Special School Serves North Tonbridge with TN10 youth club;
- Voluntary organisations field officers support the many voluntary youth groups. Wrotham Parish Council has set up a youth centre and would like it to expand to serve Borough Green and St. Mary Platt.

**Impacts of new housing developments**

The impacts of housing growth will be met by a combination of facilities provided locally and provision in and from district hubs, of which there is a minimum of one per district. As part of the hub and spoke approach, some resources for new centres of population will need to be invested in district hub services. Where new local provision is required, the service seeks to use shared buildings through a separate entrance and appropriate design. Such buildings should have good public transport and walking access.

The following tables outline current and proposed development plans for Tonbridge and Malling Borough encompassing existing services and building capacity for future increases in the population. It is expected that developers will make a proportionate contribution according to the additional population generated by their developments. The services delivered will target young people.

*Kent County Council Community Infrastructure Provision*

**Project 1:**

<b>District hubs</b>	
<b>Description</b>	Comprehensive youth service provision in main urban areas and outreach base for provision of youth services to smaller communities.
<b>Justification</b>	Statutory requirement to deliver youth services.
<b>Model</b>	A large well equipped centre that may contain a fitness studio, indoor sports facilities, art rooms, floodlit ball court, social area, café, computer suite, workshop, meeting room.
	Base for youth workers including detached project teams providing services to wider urban and / or rural area.
<b>Contributions required</b>	Can act as base for mobile service provision. The service seeks costs towards build and fit out of dedicated space for youth services to ensure capacity to meet demands from new development in the area.
<b>Partners</b>	Tonbridge and Malling District Council, Kent County Council, Local Children's' Services Partnership.
<b>Typical location</b>	Urban centres.
<b>Planned for</b>	Tonbridge and Malling

**Project 2:**

<b>Community hubs</b>	
<b>Description</b>	Service point access for smaller defined urban and rural communities and outreach base for provision of youth services to surrounding areas.
<b>Justification</b>	Statutory requirement to deliver youth services.
<b>Model</b>	Building space with additional space for mobile units with garaging, workshop, multi use games area and parking spaces. Also, office space (could be above garaging).
<b>Contributions Required</b>	The service seeks costs towards development and /or build and fit out of dedicated space for youth services to ensure capacity to meet demands from new developments.
<b>Partners</b>	Kent County Council
<b>Typical location</b>	Urban or rural areas with significant populations.
<b>Planned for</b>	East Malling; Borough Green; Medway Valley; Barham/Eccles/Malling (mobile provision); Aylesford or Allington to cover Aylesford, Allington, Ditton and Larkfield area.

*Kent County Council Community Infrastructure Provision*

**Primary and secondary education**

Primary schools

Name	Area	Type	PAN capacity*
Slade PS	Tonbridge	Primary	315
Sussex Road CPS	Tonbridge	Primary	420
Woodlands JS	Tonbridge	Junior	384
Woodlands JS	Tonbridge	Infant	270
Stocks Green PS	Hildenborough	Primary	210
Cage Green PS	Cage Green	Primary	378
Long Mead CP	Tonbridge	Primary	210
St Stephen's (Tonbridge)	Tonbridge	Primary	210
Hildenborough CEPS	Hildenborough	Primary	315
St M Clitherow Catholic PS	Tonbridge	Primary	315
Hadlow School	Hadlow	Primary	210
East Peckham PS	East Peckham	Primary	350
Capel PS	Five Oak Green	Primary	210
Stansted CEPS	Stansted	Primary	84
Trottscliffe CEPS	Trottscliffe	Primary	84
St George's CEPS	Wrotham	Primary	175
Platt CEPS	Platt	Primary	182
Borough Green PS	Borough Green	Primary	420

Name	Area	Type	PAN capacity*
Ryarrsh PS	Ryarrsh	Primary	154
St Katherine's School	Snodland	Primary	630
Snodland CEPS	Snodland	Primary	420
Aylesford PS	Aylesford	Primary	315
Tunbury PS	Walderslade	Primary	560
St Peter's CEPS	Aylesford	Primary	154
St Mark's CEPS Eccles	Eccles	Primary	140
Burham CEPS	Burham	Primary	196
Wouldham All Saints CES	Wouldham	Primary	210
Brookfield JS	Larkfield	Infant	270
Lunford PS	Lunford	Primary	210
Leybourne St Peter & St Paul CEPS	Leybourne	Primary	210
Brookfield JS (Larkfield)	Larkfield	Junior	384
The Discovery School	West Malling	Primary	210
Mereworth CPS	Mereworth	Primary	210
Offham PS	Offham	Primary	210
Kings Hill School	Kings Hill	Primary	420
Wateringbury CEPS	Wateringbury	Primary	252
West Malling CEPS	West Malling	Primary	196

*Kent County Council Community Infrastructure Provision*

Name	Area	Type	PAN capacity*
More Park RCPS	West Malling	Primary	210
St James the Great	East Malling	Primary	210
Ditton CEJS	Ditton	Junior	256
Ditton IS	Ditton	Infant	180
Plaxtol PS	Plaxtol	Primary	112
Shipbourne School	Shipbourne	Primary	56
Ightham PS	Ightham	Primary	196

Secondary schools

Name	Area	Type	PAN capacity excl post-16)*
Judd School	Tonbridge	Grammar B	600
Tonbridge Grammar School for Girls	Tonbridge	Grammar G	700
Weald of Kent Grammar School for Girls	Tonbridge	Grammar G	750
Aylesford School	Aylesford	High	900
Hayesbrook School	Tonbridge	High B	755
Hillview School for Girls	Tonbridge	High G	910
Holmesdale Technology College	Snodland	High	900
Hugh Christie Technology College	Tonbridge	High	1050
Malling School	Malling	High	900
Wrotham School	Wrotham	High	600

\*PAN Capacity is the number of pupils proposed for multiplied by the number of year groups.

### **Trends in pupil numbers**

Primary school rolls stood at 8,434 in 1991 and rose to a high of 10,001 in 1999. Since then they have fallen and are predicted to continue to fall to a low of 9,380 in 2009, at which point they are expected to level out and show some limited recovery beyond that time.

Secondary schools rolls (without post-16) stood at 6,289 in 1991 and rose to a high of 9,203 in 2006. From here they are expected to decline slowly through to 2017. Some recovery is expected following that.

Post-16 – in 1991 approximately 670 pupils stayed on into post-16 education (this represents 10.6% of the total roll, or 58.7% of Yr 11 pupils). This proportion has risen to 18.1% (111 %<sup>\*</sup>) in 2007 and is expected to continue to rise to 19.4%, as pupils are encouraged to continue their education and training to age 18.

(\* a stay on rate exceeding 100% may indicate that pupils are staying on for more than one year in post-16 and/or are coming from outside the district or from other [independent] education providers.)

### **Primary strategy**

As a result of primary strategy proposals to reduce surplus accommodation a number of schools in Tonbridge and Malling have reduced their published admission numbers and either removed or taken out of teaching use the surplus accommodation on their sites.

St James' Infant School and Millstream Junior School amalgamated recently to form St James the Great PS at IFE (210 pupils). A project is under way to rebuild the school on part of the old St James Infant School site.

### **Secondary strategy**

A number of amendments have been made to address published admission numbers and net capacity to ensure appropriate numbers of places are available. This has resulted in the net loss of around 30 pupil places.

- Holmesdale has gained around 185 following its PFI rebuilding project;
- Aylesford has gained around 120 places, again following a rebuilding project;
- Tonbridge Grammar School for Girls will lose about 140;
- Malling School has lost about 115 places;
- Other schools will lose or gain smaller numbers of places.

---

Places will need to be further reduced by 2017.

Holmesdale is increasing in popularity and has joined in a federation with the Malling School.

Children's centres

- Round 1 – no children's centres were provided in this phase for Tonbridge and Malling;
- Round 2 - centres are being worked on for completion at Long Mead PS, Tonbridge, St Stephen's, Tonbridge and St James the Great. A centre is proposed for Snodland CEP but this may be delayed to round 3;
- Round 3 - may produce more children's centres, but these are likely to be located within existing buildings or involve the "signposting" and co-ordination of existing services.

### **Summary**

Issues around falling rolls and the need to reduce surplus places will continue to need to be addressed during the Local Development Framework period. While both government and the county council policy assumes that rural schools will not be closed unless there is very good reason, issues such as sustainability and performance will need to be taken into account when proposals are made.

---

There are a number of large housing developments within the borough (i.e. Kings Hill, Holborough, Peter's Pit, and Leybourne) which are either under way or due to start within a year or two. Each of these has an acknowledged impact on local schools and provision of additional facilities has been included within the planning agreements. The situation in each area will continue to be assessed with a view to the level and timing of any new provision.

The Primary Capital Programme will also have an impact on the shape and size of many primary schools in the future – but over a longer period of time.

For both secondary and primary schools consideration may need to be given to implementing "enabling developments" with a view to securing the highest possible capital receipt to fund educational rebuilding and refurbishment programmes.

The use of schools beyond their normal hours and for a wider range of services will become more common and could have a planning implication.

**Adult social services**

**Older persons**

The total number of older persons in Tonbridge and Malling is predicted to increase by 40.1% between 2001 and 2016. There are significant projected changes for the 65 to 69 (+54.6%) age group and the 85+ (+31.9%) age group.

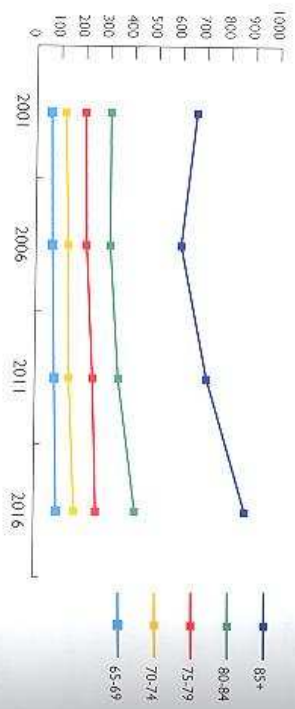
	65-69	70-74	75-79	80-84	85+	Total
2001	4,593	4,029	3,384	2,484	2,427	16,917
2006	5,200	4,600	3,500	2,500	2,200	18,000
2011	6,100	4,800	4,000	2,800	2,600	20,300
2016	7,100	5,700	4,300	3,400	3,200	23,700

**Dementia**

In the current state of health provision one of the most significant indicators of difficulties for older persons is the onset of dementia. Whilst a majority of this population make minimal demands on services availability of support for this group and their carers is very important. The Alzheimer's Society estimates that the incidence of dementia increases with age as shown over the page:

Age (years)	Percentage
65 - 69	1.3
70 - 74	2.9
75 - 79	5.9
80 - 84	12.2
85 +	27.1

Incidence of dementia in the local population:



27: www.alzheimers.org.uk/sites/scripts/documents/info/info/documentID=618

---

### **Adult disability**

Nationally the number of people with learning disabilities using social services has increased faster than the increase for all adults. This increase is significantly higher than the overall growth in demand for adult social services. Use of services by people with learning disabilities has grown at about twice the rate that would be expected from demographic trends.

A report from the Association of Directors of Social Services has highlighted research suggesting that the population of people with a learning disability is likely to grow by 22% between 2001 and 2021. In particular it identifies a very significant growth in older age groups over the same period, 62% in the 60 to 79 age group and 95% in the 80+ age group. Similarly it is expected that numbers of people experiencing disabling physical problems will increase due to improvements in medical and therapeutic services.

In addition to these trends a cohort of people with exceptional needs has been identified often in residential resources or currently at boarding schools. This group is often but not exclusively within the group of people with a learning disability and have a diagnosis within the autistic spectrum. Whilst small in number (best estimates of around 1% population) this group have challenging behaviours and specific needs requiring significant support to take their place in the community.

---

### **Capital projects**

There are outline plans for several capital projects in Tonbridge and Malling Borough encompassing existing services and building capacity for future increases in the population. These may be partly funded from capital funding available to the county council. It is expected that developers will make a proportionate contribution according to the additional population generated by their developments. The services delivered will target older people, people with learning and physical disabilities and those with mental health problems.



Project 1:

<b>KASS community hub/drop-in centre</b>	
<b>Outline</b>	Provision of a community location enabling shared use by a variety of agencies within the town.
<b>Justification</b>	Provides a fully accessible community facility enabling full use of the social facilities and a local venue for services such as dementia care, day activities for people with a learning disability and physical disability.
<b>Service model</b>	Modern delivery programmes promoting social inclusion and localised services to improve health and well being, develop life skills and support independence. This includes vulnerable adults and people with disabilities.
<b>Contribution requirements</b>	The model will be of an Active Care Centre that encourages participation in the community and increasing job and leisure opportunities. They provide a comprehensive range of services, such as drop-in resource, internet café, restaurant/café, day activities, multi-sensory room etc. Through s106 agreements with developers, KASS would look to receive either capital towards build, or refurbishment or fit-out completed by the developer in lieu of contributions through prior

<b>KASS community hub/drop-in centre</b>	
<b>Partners</b>	Private and voluntary organisations: Tonbridge and Malling Borough Council; West Kent Primary Care Trust; Adult Services Provider Unit.
<b>Proposed location</b>	Larkfield and West Malling (possible links with a school redevelopment) Tonbridge town centre to coincide with the expiry of the Riverside lease in April 2012.
<b>Planned for</b>	Larkfield and West Malling - March 2012; Tonbridge town centre – April 2012.

**Project 2:**

<b>Dementia care services</b>	
<b>Outline</b>	Provision of localised venues for service provision for this growing client group including flexible provision for younger service users.
<b>Justification</b>	Increasing opportunities for community activities for people with dementia including information and support for carers.
<b>Service model</b>	Modern delivery programme promoting social inclusion and localised services to improve health and well-being, develop life skills and support independence.
<b>Contribution requirements</b>	Through s106 agreements with developers, KASS would look to receive either capital towards build, or refurbishment or fit-out completed by the developer in lieu of contributions through prior agreement. Contributions will be used towards the acquisition, provision, and construction or renting of space for dementia day care. In addition the land element must be provided free by the developer.
<b>Partners involved</b>	Tonbridge and Malling Borough Council, Kent County Council, PCT, local resident/community groups.
<b>Proposed location</b>	Various